

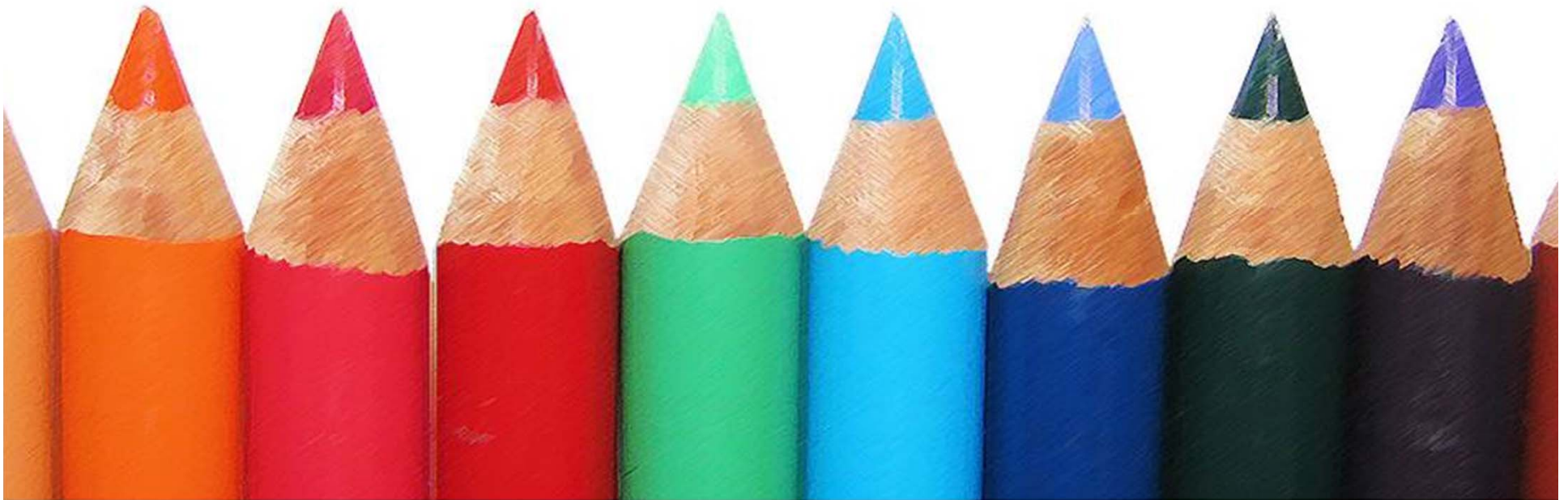
Pre-School for All (PFA) Programs

Antioch District 34

January 21, 2014

Hillcrest Pre-K/ Early Start

Team Members and Administration



Preschool For All (PFA) Grants

Birth to Three Program

- Serves 35 students and families
- \$53,015 grant awarded
- Parent Education
- Re-apply annually

Three to Five Program

- Serves 100 students
- Eight half day sections of blended program (a combination of at-risk and special education students)
- Parent Education
- Bilingual Parent Education
- \$275,880 grant awarded
- Re-apply annually



PFA Birth to Three Staff Members 2013-2014



Jennifer Dzibula, Parent Educator and Coordinator
Rebecca Wiegman, Parent Educator



PFA Three to Five Staff Members 2013-2014



Top Row: Stacie Hovik, Laura Davis, Kathy Buxton, Zenayda Garcia, and Karen Paddock

Middle Row: Kelly Stonecliffe, Amy Delany, Sue Jorgensen, Amanda Lefevers, and Meredith Metzler

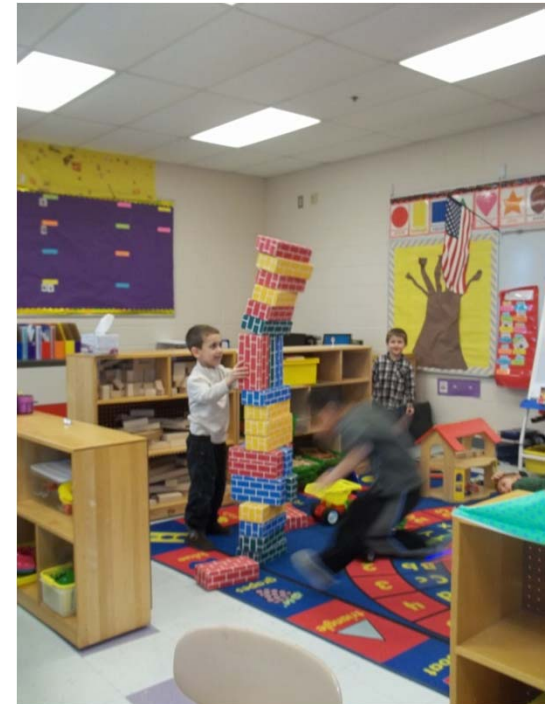
Front Row: Heather Potocek, Karen Boghosian, and Ginny Smith

Not pictured: Pam O' Connor



Components of Preschool for All Grants

- Developmental screening and referral
- Research-based curriculum
- Parent education and involvement
- Community collaboration
- Professional development



Developmental Screening and Referral

Birth to Three Program

- Program and screening information is advertised within our district and throughout the community
- A screening is scheduled and conducted by one of the program's parent educators
 - ☐ Ages & Stages Questionnaires (research based)
 - ☐ Parent Questionnaires
 - ☐ Vision/Hearing Screenings
- The screening identifies risk factors for children (infant through 36 months)
- Risk factors determine eligibility for the PFA Birth to 3 program
- Children with significant delays are referred to Illinois Early Intervention



Developmental Screening and Referral

3 to 5 Year Pre-K Program

- Program and screening information is advertised within our district and throughout the community
- Six screenings annually
- A screening is scheduled and conducted by one of the pre-k staff members including special education related service members:
 - ☐ DIAL 4 screener (research based)
 - ☐ Parent Interview
 - ☐ Vision/Hearing Screenings
- The screening identifies risk factors for children (ages three to five)
- Risk factors determine eligibility for the PFA 3 to 5 program
- Once the 100 spots are filled, students are placed on a waiting list
- Children with significant delays are referred to the Special Education District of Lake County (SEDOL) for an evaluation through the Early Childhood Assessment Team (ECAT)



Birth to Three Program Curriculum

Parents as Teachers (PAT)

- Research based
- ISBE approved
- Parent educators conduct two home visits monthly with each family
- Parent educators provide two group sessions monthly in a classroom or in the community
- Development of parenting skills and understanding of developmental milestones
- Parent-child interaction and structured activities/play in home, school, and community
- Development of Family Plans for each family focusing on strengths, capabilities and skills within a healthy nurturing environment.



PFA 3 to 5 Program Curriculum

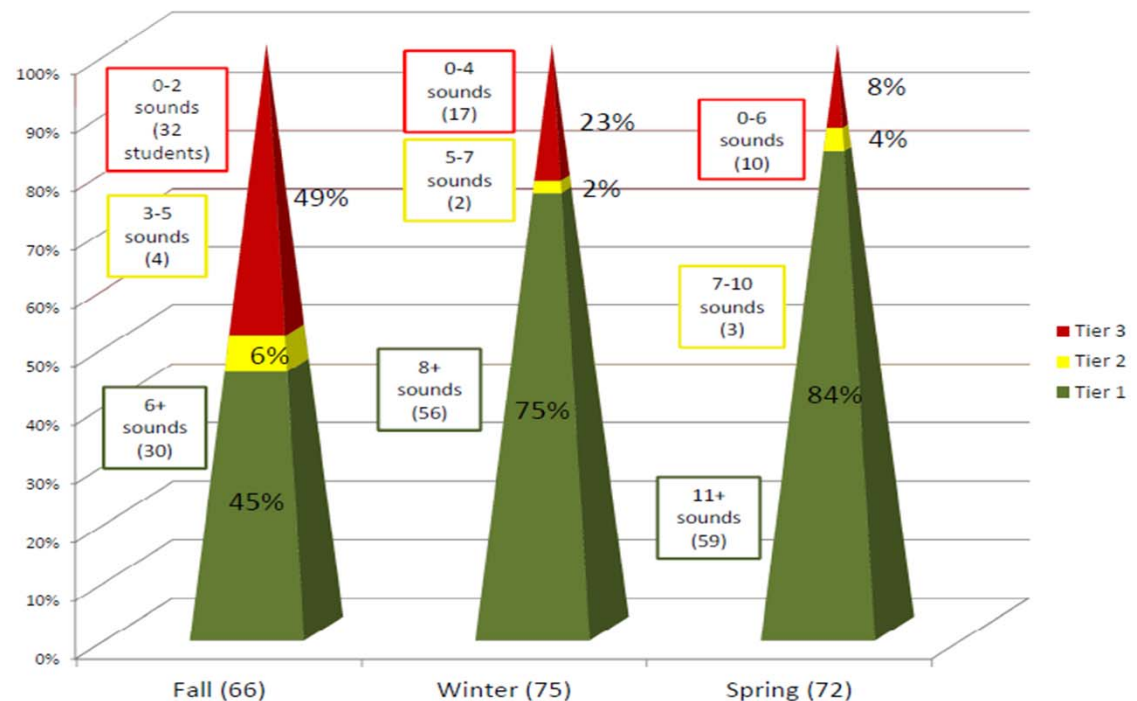
- Instruction is based upon the Illinois Early Learning and Development Standards and Creative Curriculum (research based) using thematic units, multisensory activities, and hands on learning to teach:
 - Literacy Skills(Michael Heggerty Phonemic Awareness Curriculum)
 - Math Skills
 - Social Skills (PATHS curriculum)
 - Motor Skills
 - Play Skills
 - Other components of learning
- Instruction is differentiated to meet individual needs (at-risk and special education)
- Instruction is provided in large group, small group, and individual format (best practice)
- Annual Home Visits
- PBIS is used in the classrooms to promote positive behaviors
- Specials once a week (music, library, computers) are built into the schedule
- Daily recess time at pre-k playground area (weather permitting)
- Each classroom has one iPad for instruction and incentives



PFA 3-5 Response To Intervention (RTI)

The teachers have developed an RTI program for Kindergarten-bound students, focusing on phonics and phonemic awareness:

- Intervention: Jolly Phonics provided three/four times a week for 20 minute sessions in small groups
- Team review of the data drives the decision regarding each student's required level of tiered support
- Students receiving RTI supports are progress monitored
- Pre-K Screening Assessment tool is used to gather data which is administered 3x a year
- Data has been collected for the past five years and indicates tremendous growth with our pre-k students





Parent Education and Involvement

Our purpose is to strengthen families and promote the well being of children through parent education and support.

Program Parent Educators work with families to:

- Conduct home visits
- Coordinate and supervise fieldtrips
- Develop and organize family involvement activities (family reading night, pumpkin carving night, fall fun day, winter involvement, fitness fun night, grandparent's/special friends day, music concert)
- Coordinate and/or present at Parent Education Workshops
- Organize and facilitate Parent Advisory Committees
- Manage the Lending Library and Book Bingo
- Arrange community participation days



Community Collaboration

- Recently formed the Early Childhood Community Forum for Antioch
- Local agencies/organizations/resources currently involved in collectively discussing issues related to the development of our youngest learners
 - Park Districts: Antioch and Lindenhurst
 - Head Start of Lake County
 - Day cares: Antioch Learning Center and A Child's Place
 - Champions Afterschool Program
- Development of a plan for the 13-14 school year
- Development of a Resource Guide
- Collaboration of programs and resources
- Regular meetings and plan development



Professional Development

- Wednesday Professional Development (District staff development)– 2x a month
- Life Skills Progression Training (Birth to Three)
- Parents As Teachers Training (Birth to Three)
- Regular meetings with PAT consulting supervisor (Birth to Three)
- Lake/McHenry County Early Childhood Conference --October
- Picture Exchange Communication System (PECS)-- November
- The national Opening Minds Conference, held annually in Chicago, has been attended by our pre-k staff for years. In recent years, four staff members have presented on topics relating to early childhood development. -- January
- Creative Curriculum (two day conference)-- in February/March
- SEDOL's Classic Conference (February)
- Illinois Early Learning and Development Standards Training (April)



THANK YOU!

We are very passionate about our early learning programs:

- Our staff members are phenomenal!
- Our students are exceptional!
- Our families are so grateful!

THANK YOU to the Board of Education for continuing to support this program in our district. Our program provides many at-risk students and families access to wonderful services and opportunities prior to kindergarten which enhance their learning and development. The grant programs appreciate all of your support!!!



PLEASE VISIT our program----
you are always welcome!